

Warped door straightener

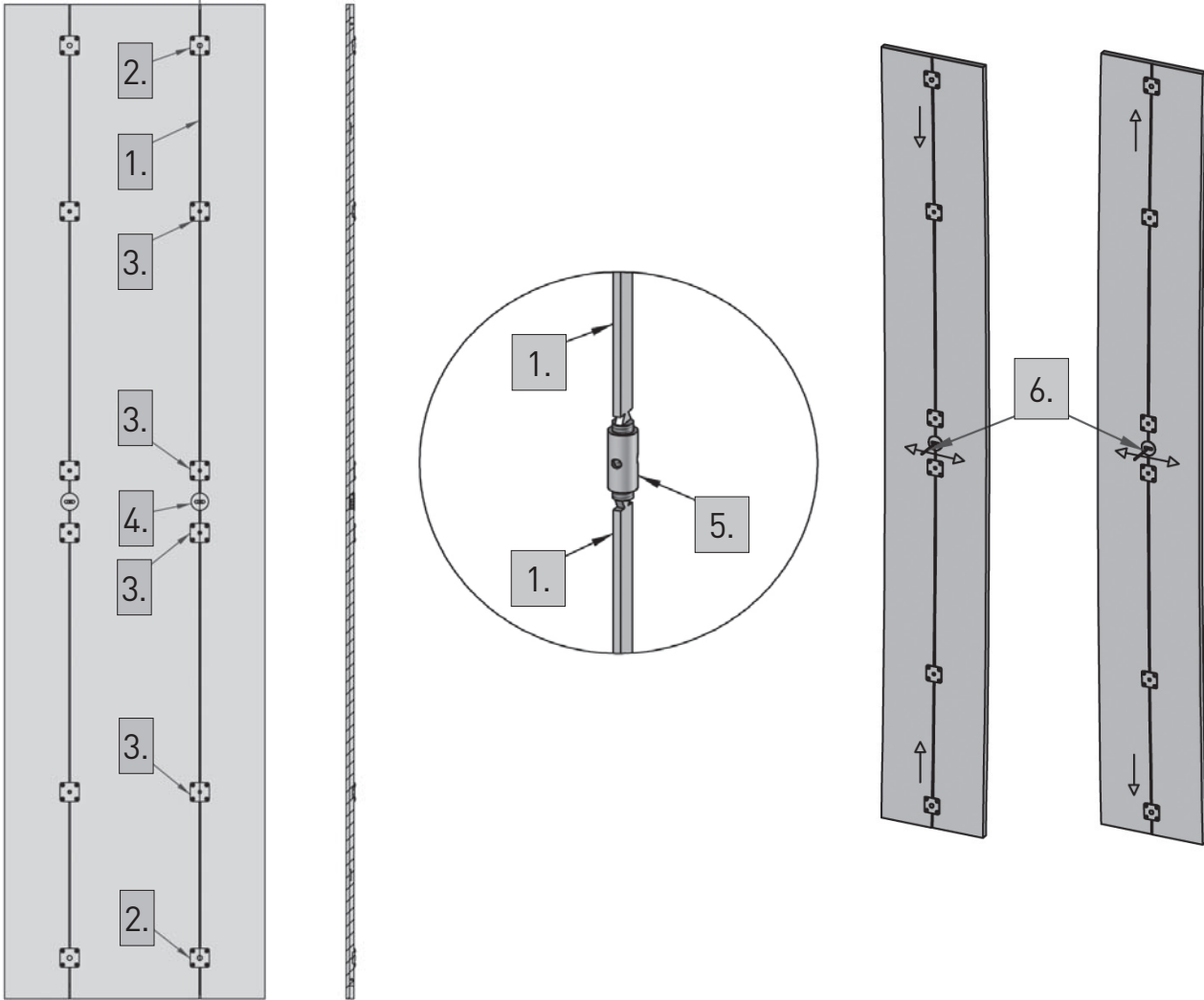
APPLICATION



CHARACTERISTICS



WARPED DOOR STRAIGHTENER



A-SN-SDP-TU SET



Tightening strip 2 pcs.



Tensioning plate 2 pcs.



Pressure plate 4 pcs.



Cover cap 1 pc.



Positioning sleeve 1 pc.



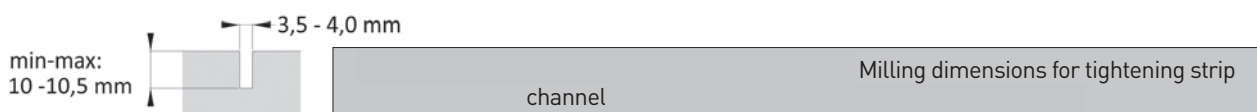
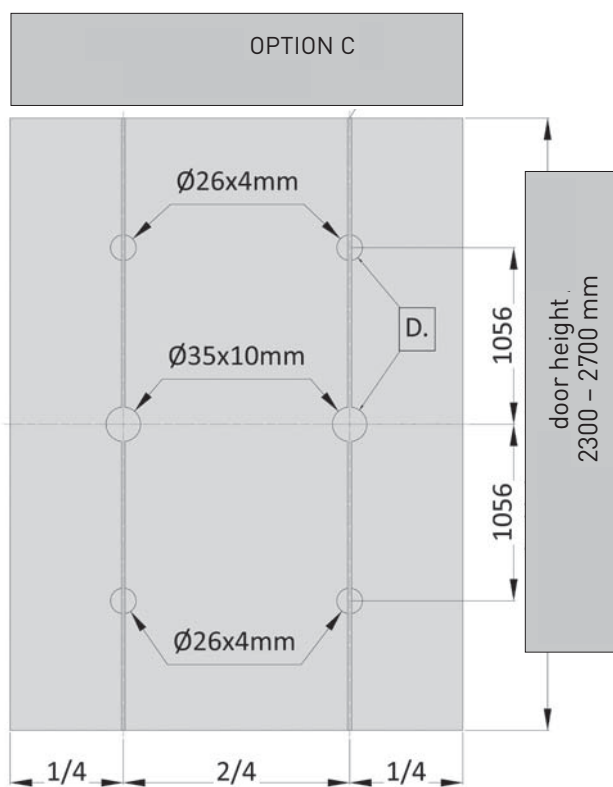
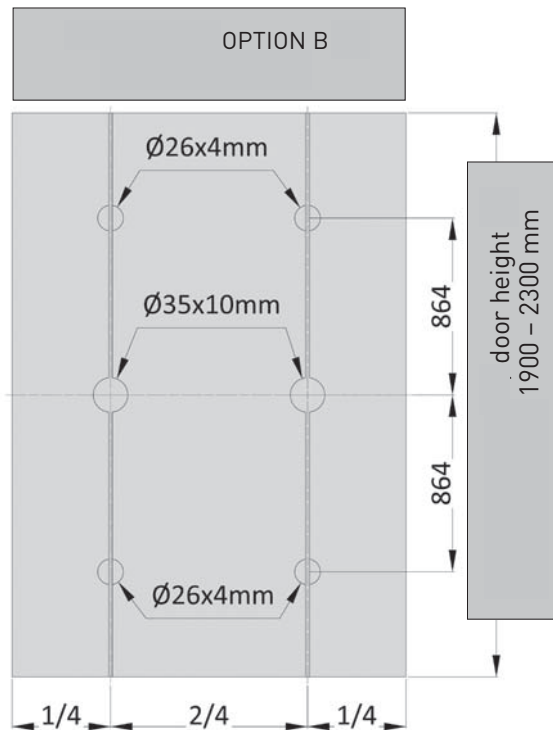
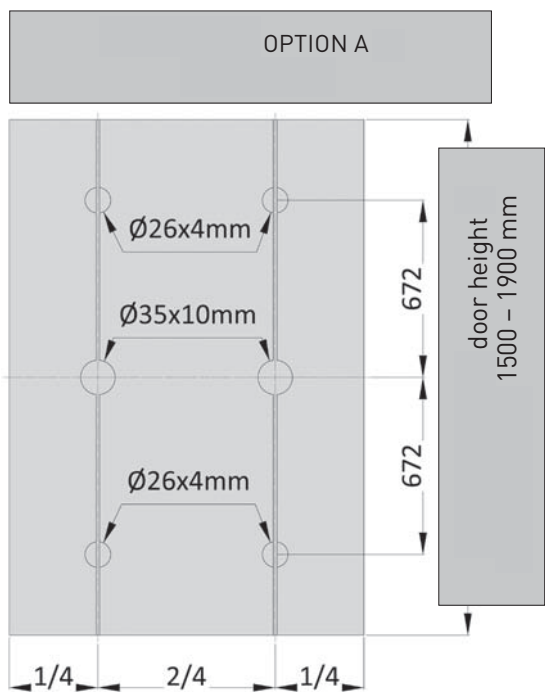
Adjustment spanner 1 pc.

tapered head 4 x 16

Set includes 24 fixing screws, 1 screw with

* Use two sets of hardware, if the door width is greater than 600 mm.

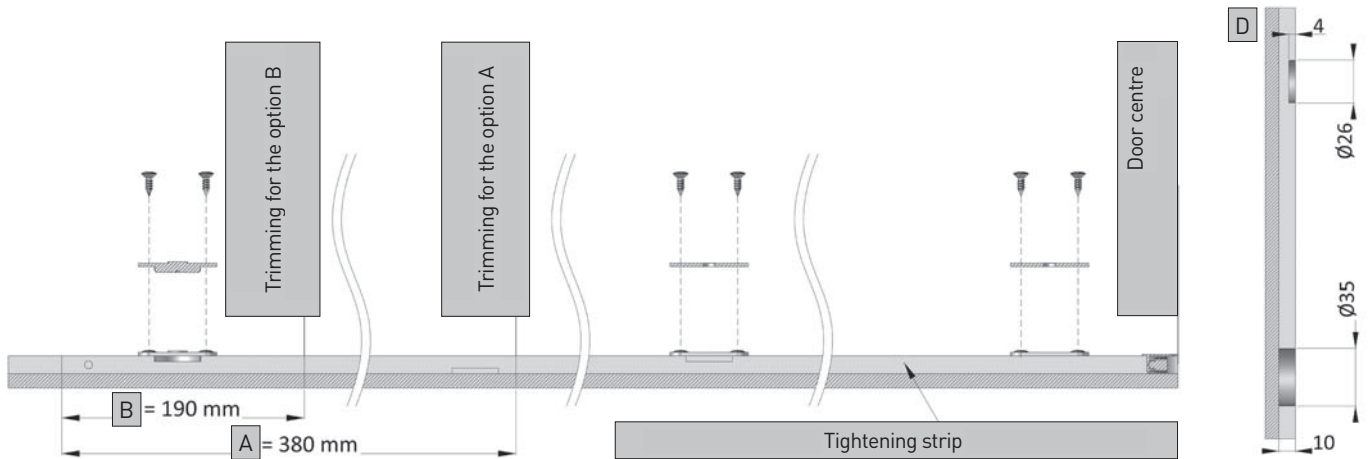
depending on door height Arrangement of fixing holes



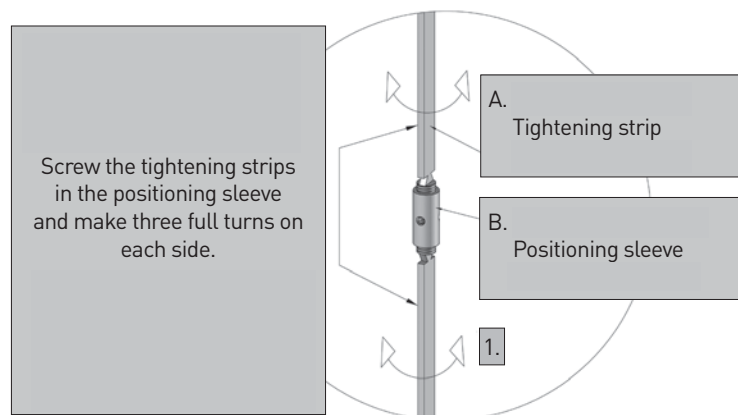
PREPARATION OF TIGHTENING STRIP

TRIM THE STRIP ACCORDING TO THE DRAWING:

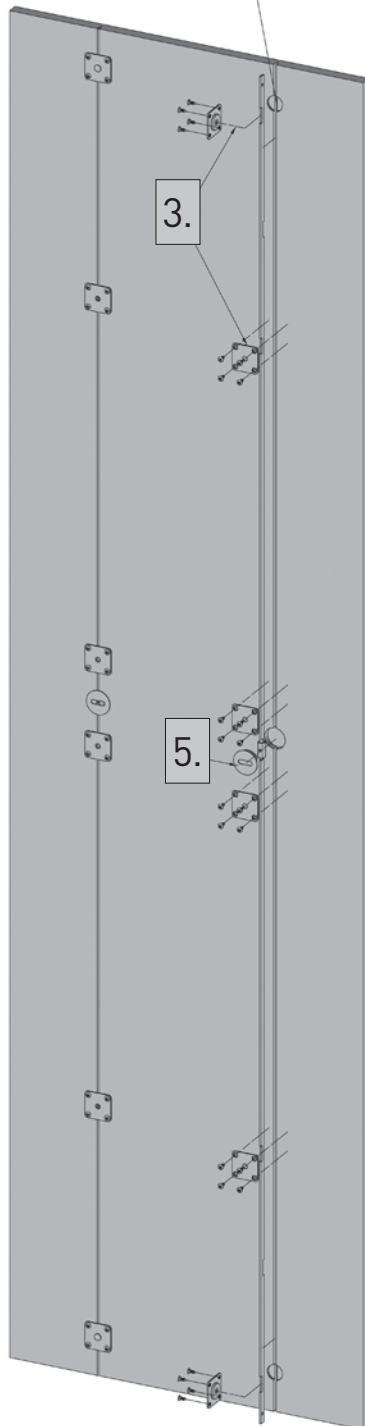
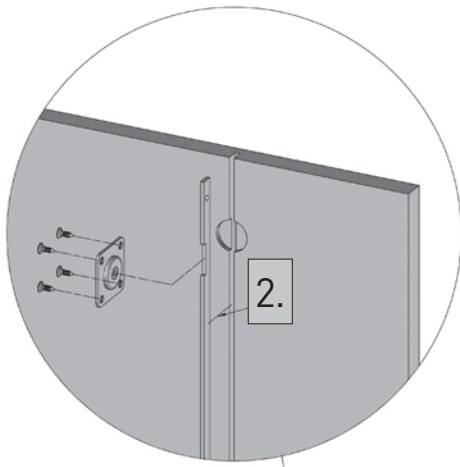
- A. For the door with the height of 1500 – 1900 mm: trim 380 mm.
- B. For the door with the height of 1900 – 2300 mm: trim 190 mm.
- C. For the door with the height of 2300 – 2700 mm: it is not necessary to trim the strip.
- D. Mill the holes for tensioning plates and cover cap.



INSTALLATION OF STRAIGHTENER



1. Join the tightening strips (A) by means of a positioning sleeve (B).
2. Insert the joined strips in the milled channel.
3. Insert and tighten the pressure plates and tensioning plates.
4. Use the adjustment spanner to set the proper door plane.
5. Glue the cover cap in.



Wypaczenie drzwi można zredukować w dwóch kierunkach.
The warp of the door can be reduced in two directions.
Искривление двери можно уменьшить в двух направлениях.

