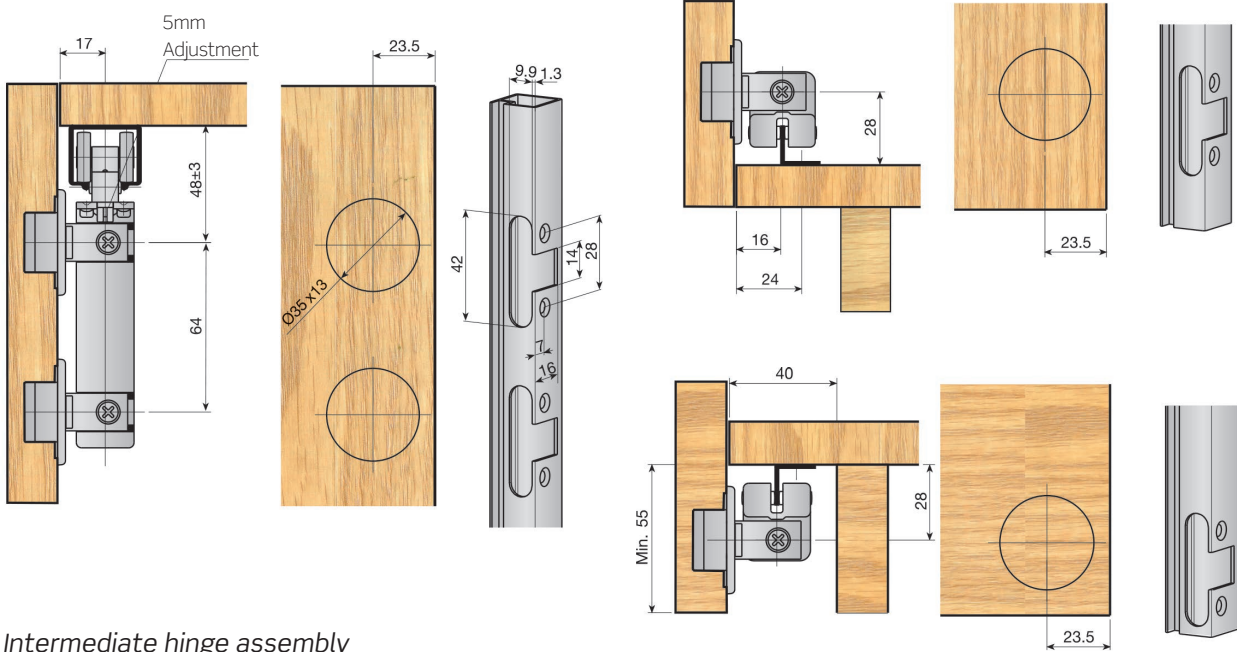


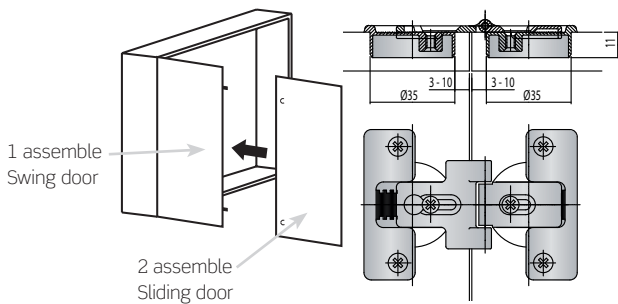
■ Technical data

Drilling plane



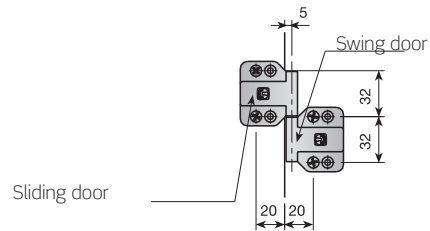
Intermediate hinge assembly

ZAMAK Hinges

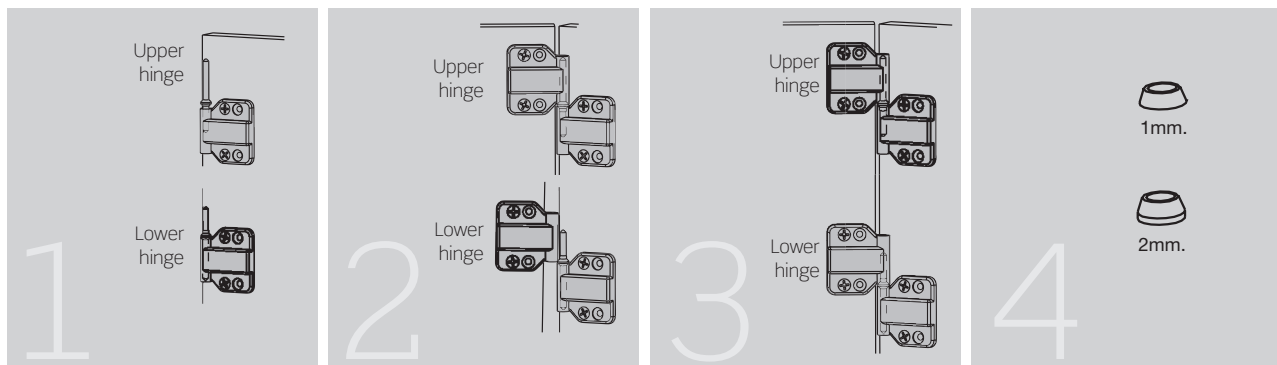


PA Hinge

Place sliding door intermediate hinges over the swing door hinges.



View from inside



Place shafts:

Insert the shortest side of the shaft in the upper hinge. Insert the longest side of the shaft in the lower hinge.

Place sliding door:

Only the upper hinge must be inserted in the shaft.

Assemble the door:

Guiding yourself by the upper hinge shaft, lift the door until lower hinges align with their shaft. When the door falls, it automatically fits into place.

Adjustments:

Please use washers provided.